

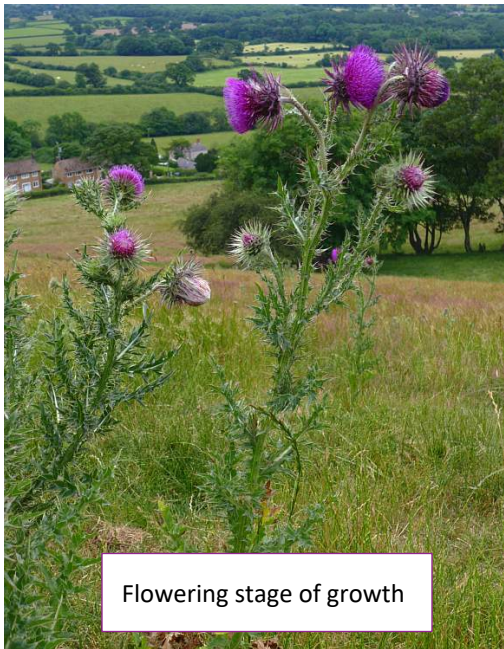
MUSK THISTLE



Bolting stage of growth



Impact of how they can take over



Flowering stage of growth



Rosette stage of growth

What is it?

With musk thistles, seeds may germinate in the fall or spring forming rosettes of leaves. These thistles tend to have spikey stems and leaves, and seeds may mature within the heads after control. Successful management, by hand or by herbicide, can help prevent seed production. One plants may produce 20,000 seeds and may live in the ground for up to 50 years

Life Span: Biennial (can be annual)

Management: 2,4-D ester (4L) –late fall treatment of rosettes or in spring before flowering stage

Tordon 22K – Good for application from Oct.1-Dec.1

Grazon P+D – rosette to early bolt growth stage application